

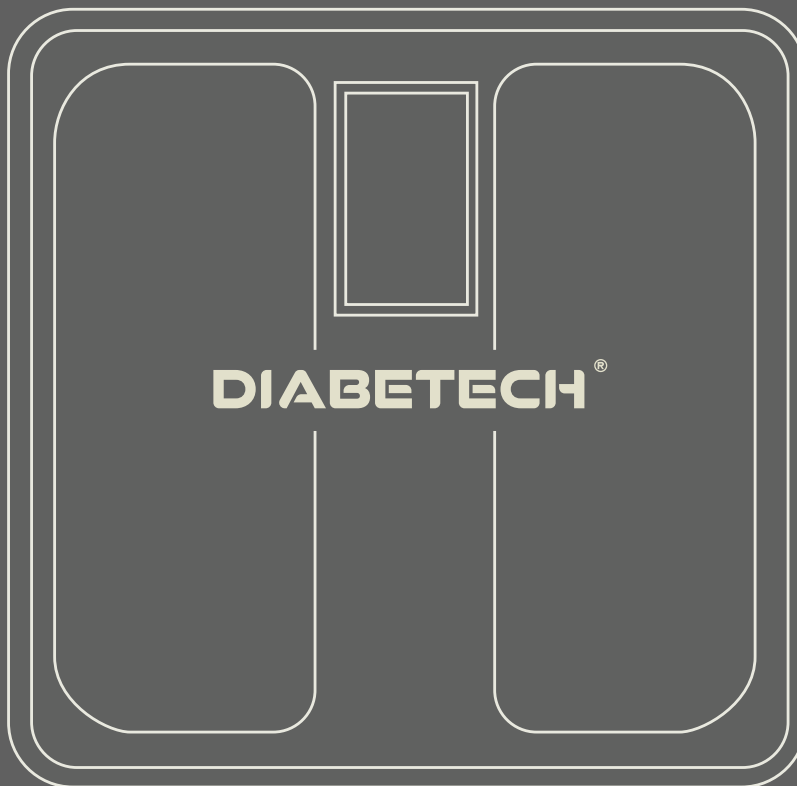


German Technology

The World's First Technology

Bioresonance Energy Wave + Far Infrared

**MERIWELL**



# Technology Milestones

•Far Infrared  
Energy Belt

**Gen5  
2014**

•Ultrasound  
Moxibustion

**Gen6  
2018**

•German  
Bioresonance Energy Wave  
Technology

**Gen7  
2020**

•AI Smart Chip  
•Insulation Stability  
Against Metal

**Gen8  
2022**



# DIABETECH®

## A New Way of Wellness

### The main principles of DIABETECH®:

1. By introducing resonance energy waves, human tissue cells can resonate and generate heat.
2. Magnetic energy can regulate blood pressure in both directions, increase the oxygen-carrying capacity of red blood cells, reduce blood viscosity, enhance and improve the body's immune function, and improve the body's resistance to disease.

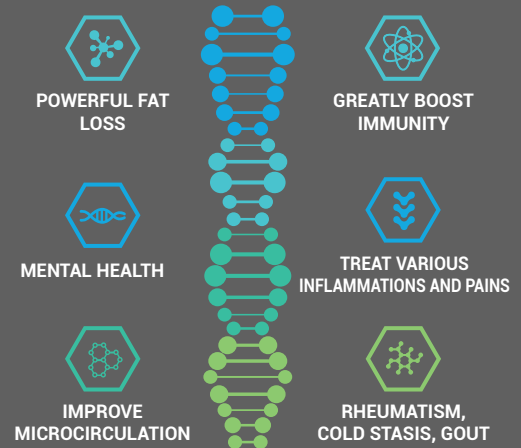


*"The main cause of illness is low body temperature and dirty blood."*

DIABETECH® targets 4 Metabolic Functions:

- Tissue replacement and regeneration (metabolism)
- Detoxification
- Generate energy and exercise
- Immunity and Repair

### The Clinical Values of DIABETECH®



# Temperature Determines Health



Dr. Takeshi Ishihara,  
Senior Consultant of Former  
Prime Minister of Japan

## Low Temperature Is The Root Of All Diseases.

~Japan Old Saying

When the body temperature is 36.5 to 37°C, the metabolism is strong and all the sugar in the blood is consumed; but if the body temperature is lower than 36.4°C, the metabolism is poor and the sugar is not consumed but accumulated in the blood.

## Low Body Temperature Causing Insulin Resistant And Fat Accumulated In Blood Vessel

### Burn Blood Glucose

The metabolism of muscles, brain, liver, and cells throughout the body is greatly enhanced, and blood circulation in the pancreas is better, ultimately can promote the secretion of insulin, when body temperature increased.

We need to increase body temperature, breaking down the blood scales blocking the blood vessels. Blood enters the pancreas, allowing the islets to have more raw materials to produce insulin. So the higher the body temperature, the lower the blood sugar!





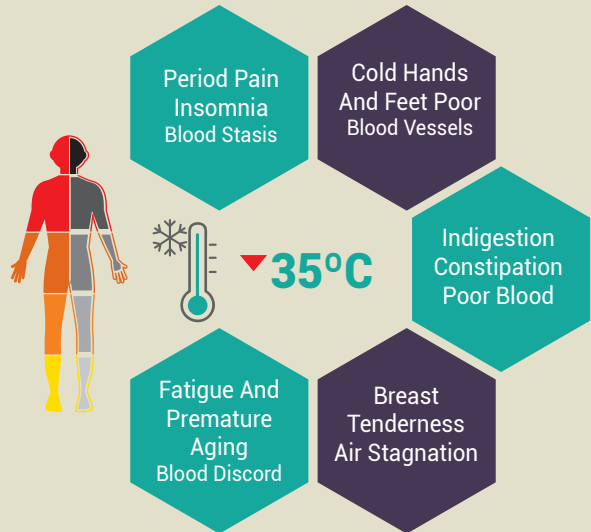
# Cold Is Trapped From The Feet



Have you heard of "heat shock proteins HSP"? HSP is also called self-repair proteins, HSP will repair damaged cells and can enhance the body's immunity. When cells are stimulated by high temperatures, they produce heat shock proteins to repair our damaged cells.


## Heat Shock Proteins

Coldness in the human body will start from the soles of the feet and then spread to the stomach and lungs, causing constipation, diarrhea, kidney disease, rheumatism, allergies and other diseases. If the body temperature is as low as about 35 degrees, cancer cells will proliferate.



# Status Of Use

After a 30-minute session, you can experience excellent physiological results:

- 
- 1.** Blood circulation is improved, fatigue is eliminated, and the spirit is radiant.
  - 2.** Improve the pulse condition and adjust the irregular pulse condition to an almost stable state.
  - 3.** Blood pressure improvement
  - 4.** A comfortable warm feeling is felt all over the body, which lasts for hours.
  - 5.** The body becomes light and unburdened, and can be maintained for half a day to a day.
  - 6.** Sleep deeply and wake up refreshed in the morning.
  - 7.** Your bowel movements will get better..
  - 8.** Improve urinary function.
  - 9.** Eliminate puffiness
  - 10.** Effectively eliminate or relieve pain

# Healing Crises



MERIWELL  
HEALTH TECH





## Symptom

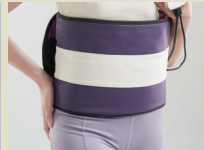
## Healing Crises

Ankle Swelling And Pain	➤	The lesions that have been sprained, or the blocked meridians. It is a result of dissipating blood stasis and dredging the meridians.
Knee Soreness	➤	Is the manifestation of wind, cold and dampness emanating from the joints.
Calf Soreness	➤	Is the result of muscles under high-frequency vibration, just like muscle tiredness after exercise.
Diarrhea Or Abdominal Pain	➤	Occurs when there is too much waste in the body.
Rash	➤	Appears when liver function is low, allergic condition, or excessive toxins.
Drowsiness, Fatigue And Fatigue	➤	Appear when genki is insufficient.
Dry Mouth And Bad Breath, Frequent Farting Polyuria, Smelly Urine	➤	Toxin efflux phenomenon.
Snot, Cough	➤	And toxin discharge phenomenon.
Obvious Heartbeat, Chest Tightness, Lack Of Breath	➤	The transition period of cardiac function recovery.
Nosebleeds	➤	Blood toxin discharge.
Headache Or Pain In The Limbs And Joints	➤	The recovery path of old disease.
Difficulty Falling Asleep, Irritability	➤	Short-term imbalance due to insufficient blood, over-function of organs, and inability of balancing nutrition.
Hematochezia, Hemorrhoid Bleeding	➤	Blood toxin excretion phenomenon.
Irregular Menstruation	➤	Blood toxin excretion phenomenon.
Dizziness, Chest Tightness, Muscle Aches All Over The Body	➤	The phenomenon of neutralizing the body's acid excretion.
A Feeling Of Dampness And Heat In The Body	➤	A phenomenon of vigorous blood circulation.
Itchy Skin, Molting	➤	Skin metabolism.
Acne And Pimples On The Face	➤	Toxins are excreted through the skin.

*It is normal for the 18 kinds of reactions to appear when you start to use DIABETECH® to recuperate your body.*

## The Difference Between Hyperthermia Equipment

	 DIABETECH	 Sweat Sreamer	 Terahertz Light Wave	 Moxibustion Spectrum
Feature Upgrade				
0% Burden On The Heart	✓	✗	✗	✗
Nurturing Of The Kidney	✓	✗	✗	✗
Warm Bones	✓	✗	✓	✓
Blood Pressure/ Blood Sugar Drop	✓	✓	✗	✓
Dehydration, Skin Blisters	✗	✗	✓	✓



www.meriwell.com

21A, Jalan Hujan Rahmat, Taman Overseas Union, 58200, Kuala Lumpur, Kuala Lumpur, Malaysia

Tel: 019-7211888 Email: Eric@meriwell.com